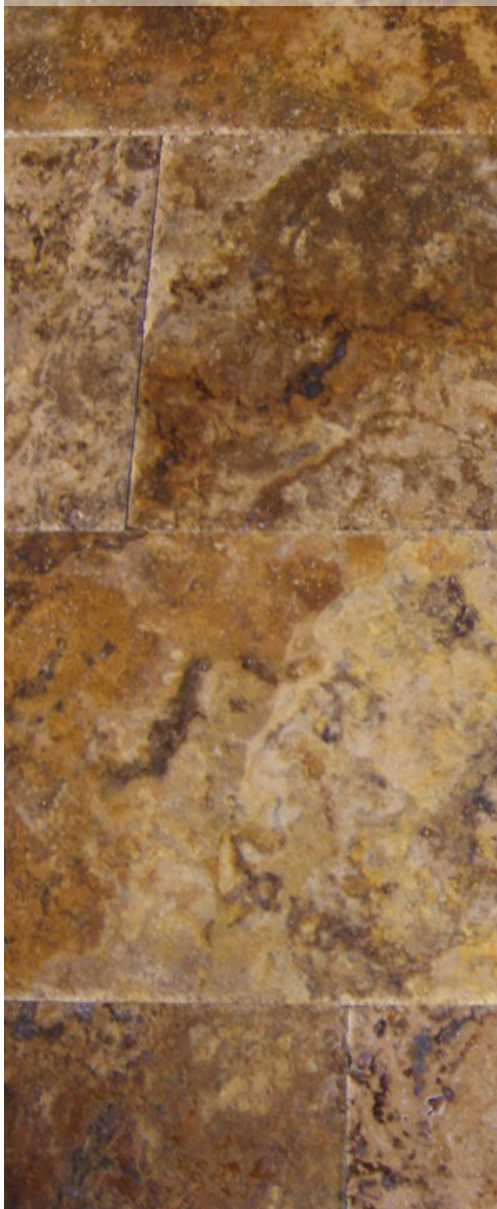


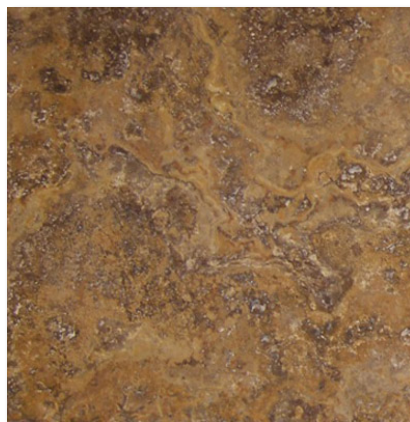
Autumn Leaves

Warm, golden tones in a brushed and chiseled finish. The extremely varied hues of this travertine range from light cream to beige, to gold and dark brown. This stone is available ONLY as a collection of four sizes that make up the Versailles Pattern. Each bundle includes two 8x8, one 8x16, two 16x16 and one 16x24 tile.

BEST  **TILE**™



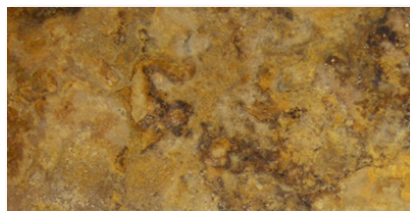
8x8



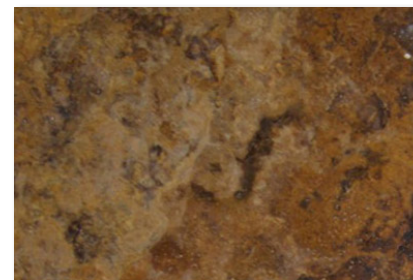
16x16



8x16



16x24



| | |
|------------------------|------------------------------|
| <i>Material</i> | Natural Stone |
| <i>Finish</i> | Brushed and Chiseled |
| <i>Sizes Available</i> | 8x8, 8x16, 16x16, 16x24 |
| <i>Wear Code</i> | 8 - Customer Determines Use. |

Shade variations are inherent characteristics of ceramic tile and stone products. Therefore, the reproductions shown may not match exactly tiles sold. We urge all customers to inspect any purchase prior to installation.